

# RICHARD TRAJCEVSKI

INDUSTRIAL DESIGNER | IMAGINEER

## PROFILE

Name  
Richard Trajcevski

Phone  
+61 409 392 596

Email  
richard.trajcevski@gmail.com

## SOCIAL

 <https://au.linkedin.com/in/richardtrajcevski>

## EXPERIENCE

2019 - Current

### MICOS Group

Fabrication Designer

- Effectively communicate with design and production team to ensure feasibility of conceptual solutions
- Produce Assemblies and Shop Drawings for Fabrication, Assembly & Installation
- Generation of Parametric Models for Multi Part Assemblies
- Deliver drawings on a schedule, based on project schedule requirements
- Site visits and field measurements as required
- Assist with project management
- Prepare fabrication shop drawings
- Prepare conceptual design and draft submittal drawings for the client, field measurement drawings, fabrication and final installation drawings
- Development of 2D & 3D designs in Autocad including Manufacturing drawings and 3D renderings to communicate details & design intent to both fabricators, suppliers and client.
- Provide a full set of production and set up drawings for each project including, but not limited to, the following:
  - Plan, Elevation and 3D Modeling
  - Extrusion/Connection details for modular designs
  - Custom Fabrication/Material call outs
- Management of International Suppliers and Manufacturers to ensure design and product intent has been met.
  - Quality Control Management
  - Design Detailing with the input of the supplier/manufacture to ensure design details and manufacturing techniques/processes are suitable for desired outcome

# RICHARD TRAJCEVSKI

INDUSTRIAL DESIGNER | IMAGINEER

## PROFILE

Name  
Richard Trajcevski

Phone  
+61 409 392 596

Email  
richard.trajcevski@gmail.com

## SOCIAL

 <https://au.linkedin.com/in/richardtrajcevski>

## EXPERIENCE

2015 - 2018

### TILT Industrial Design

Industrial Designer

- Research & Develop Client Concept Sketches into CAD
- Produce Assemblies and Shop Drawings for Fabrication, Assembly & Installation
- Generation of Parametric Models for Multi Part Assemblies
- Communicate and present Concepts for approval design in briefings using rendering tools
- Collaborate with internal stakeholders and vendor partners to design, deliver and install projects to a range of local and international B2B and B2C clients
- Develop and grow trusted relationships with clients heightening experience and satisfaction by acting as the product and solution expert demonstrating sound market and industry knowledge.
- Identify and establish new strategic Vendor Relationships and nurture existing, to broaden and deepen relationships to ensure projects are consistently quality assured, cost effective and delivered to schedule
- Together with the Director, drive differentiation/value proposition and broaden industry networks by promoting company brand and Identifying needs/business opportunities presenting and/or participating at conference events, exhibitions and trade shows.

## QUALIFICATIONS

2011 - 2015

Bachelor of Design in Industrial Design  
University of New South Wales

## SKILLS

### Technical Skills

Qualitative research	<div><div></div></div>
Design thinking	<div><div></div></div>
Idea generation	<div><div></div></div>
Rapid prototyping	<div><div></div></div>
Design detailing	<div><div></div></div>
Presentation	<div><div></div></div>

### Proficiencies

SOLIDWORKS	<div><div></div></div>
Adobe Illustrator	<div><div></div></div>
Adobe InDesign	<div><div></div></div>
Adobe Photoshop	<div><div></div></div>
KeyShot	<div><div></div></div>
Rhino	<div><div></div></div>
FileMaker	<div><div></div></div>

### Professional Attributes

Visual thinker	<div><div></div></div>
Passion for Clients	<div><div></div></div>
Driven & Enthusiastic	<div><div></div></div>
Curious & Resilient	<div><div></div></div>
Hard working	<div><div></div></div>
Great sense of Humour	<div><div></div></div>

# RICHARD TRAJCEVSKI

INDUSTRIAL DESIGNER | IMAGINEER

## PORTFOLIO

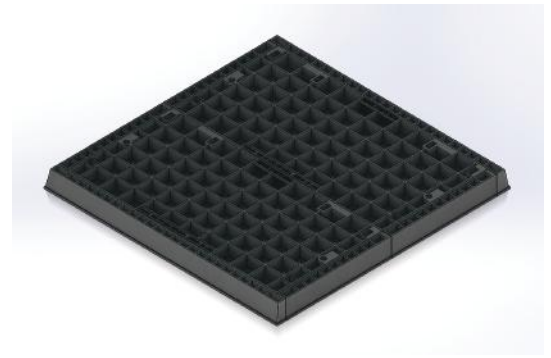
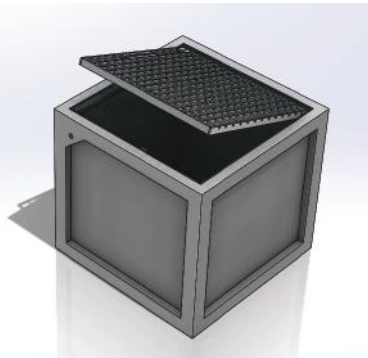
### CMRI - Donor Wall

The Children's Medical Research Institute Honour Role Wall is a playful, yet appreciative homage to those who have contributed to the improvements in children's health that CMRI's research has made. The design consists of 10 brightly coloured helix sculptures, resembling DNA strands, mounted on a precast concrete wall. Each helix includes gold, silver and bronze embellished plaques with the names of 79 generous donors and space for more to come.



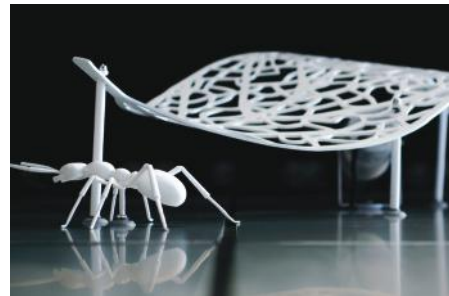
### Durham Drainage

Product and Concept development for Durham Drainage Products sees a plethora of Drainage Grates, Access Covers and Precast Concrete Assemblies being redesigned to adhere to new standards, outperform competitors and continuously develop existing Drainage solutions. Reverse Engineering & Parametric Modelling are used to recreate CAD models and assemblies from basic shop drawings for fabrication and mass production.



### Public Art - 'Ants'

145 painted, cast brass ants were modelled, fabricated and installed as per Australian artist, Ross Shephard's conceptual designs. Installation of the artwork was a design challenge. Establishing connection details and an intelligent install methodology was vital, whilst maintaining a high level of aesthetic detail.



### 'Malu Githalayl'

Acclaimed Australian artist, Brian Robinson's major sculptural installation, 'Maly Githalayl' saw the design development, engineering and manufacturing of three vibrantly colourful crabs, fixed to the façade of the Musée Océanographique de Monaco. Detailed 3D CAD models for each crab were created and utilised to produce 2D manufacturing drawings. Each crab was constructed using CNC machined honeycomb panel, wrapped in digitally printed vinyl.

